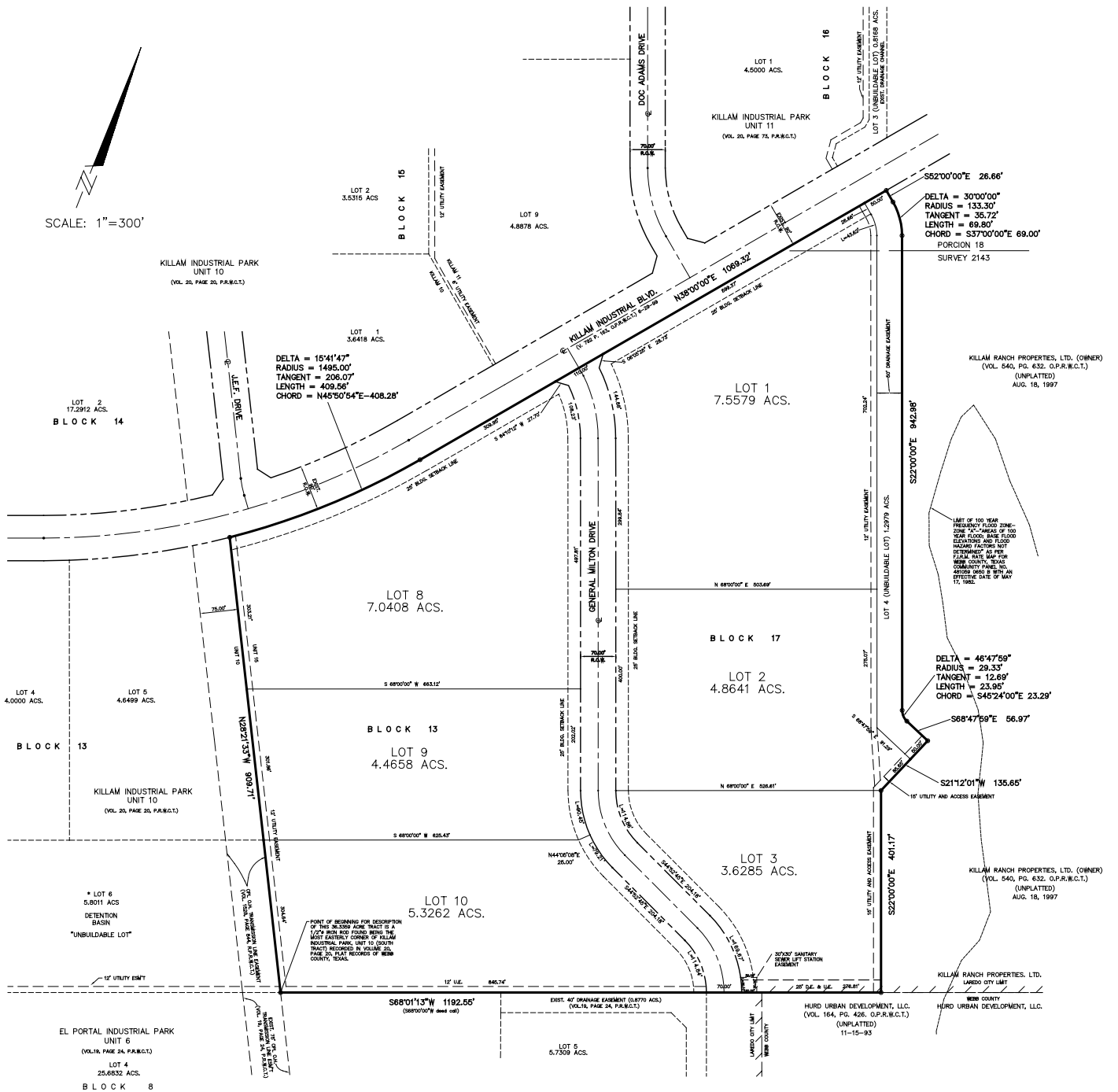




SCALE: 1"=300'



KILLAM INDUSTRIAL PARK UNIT 15

A 36.3359 ACRE TRACT OF LAND
SITUATED IN

PORCION 18, JOSE DE BUSTAMANTE, ORIGINAL GRANTEE, ABSTRACT 21 AND
SURVEY 2143, ABEL MORGAN, ORIGINAL GRANTEE, ABSTRACT 591
CITY OF LAREDO, WEBB COUNTY, TEXAS