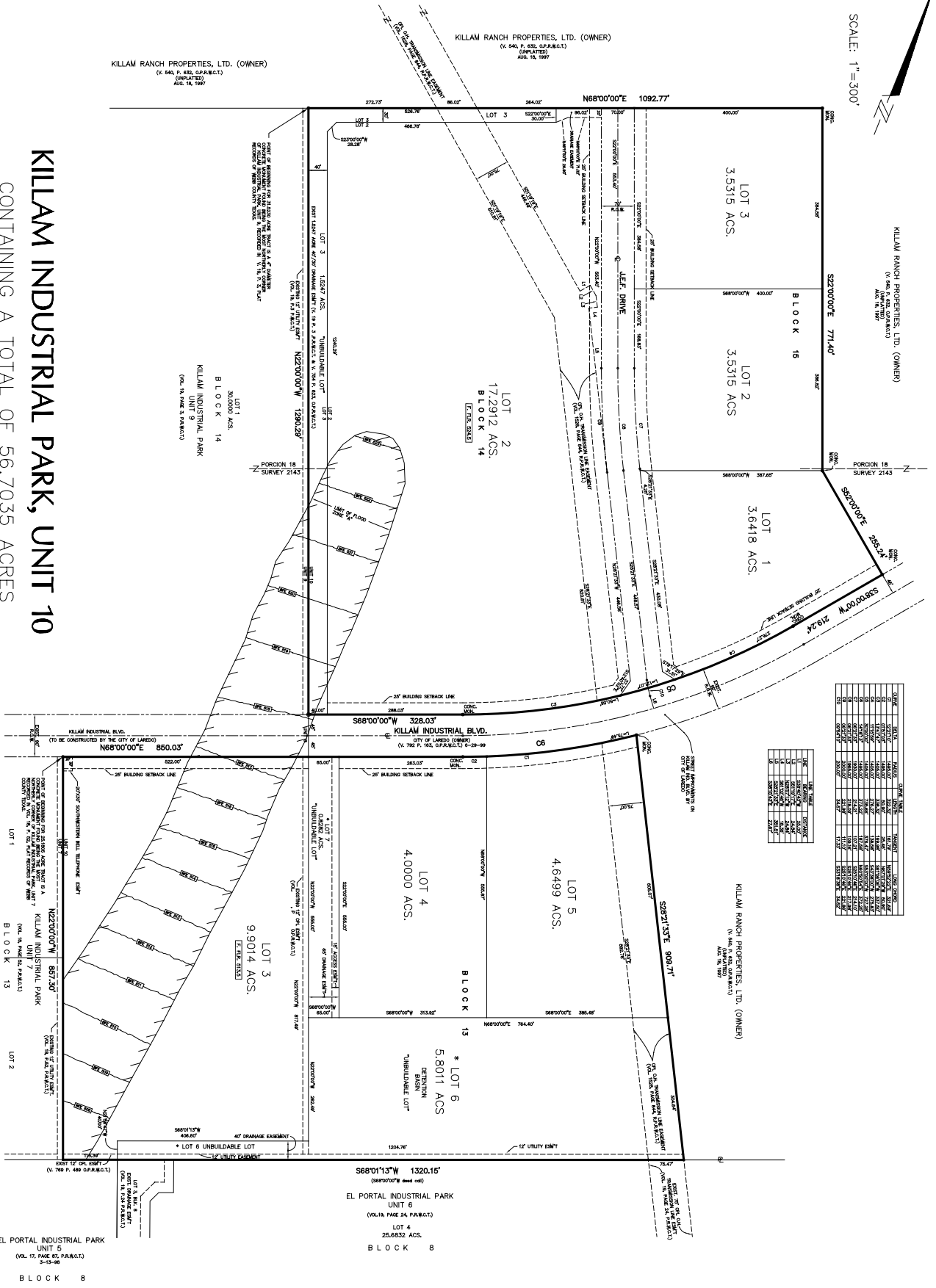


SCALE: 1" = 300'



KILLAM RANCH PROPERTIES, LTD. (OWNER)
 (V. 540, P. 632, O.P.A.B.C.T.)
 (AMPLATED)
 AUG. 16, 1997



KILLAM INDUSTRIAL PARK, UNIT 10

CONTAINING A TOTAL OF 56.7035 ACRES
 SITUATED IN

PORCION 18, JOSE DE BUSTAMANTE, ORIGINAL GRANTEE, ABSTRACT 21 AND
 SURVEY 2143, ABEL MORGAN, ORIGINAL GRANTEE, ABSTRACT 591
 CITY OF LAREDO, WEBB COUNTY, TEXAS

EL PORTAL INDUSTRIAL PARK
 UNIT 5
 (VOL. 17, PAGE 26, P.A.B.C.T.)
 5-13-96
 BLOCK 8